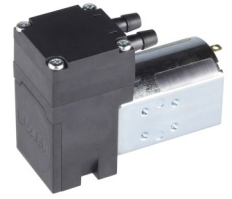


Boxer Pumps > Products > Liquid Diaphragm Pump

16K liquid diaphragm pump with 12 and 24 V DC Motor



Technical Data

Free Flow ¹	225 ml/min
Max Pressure	2.0 bar
Max Vacuum	8.0 m H ₂ O
¹ Value is show for EPDM elastomers and 24 V DC motor. See flow curves on page 2 for other configurations	
Free Flow (gas / dry)	180 ml/min
Max Suction Height (dry)	3.0 m H ₂ O
Voltage	12 or 24 V DC
Power Consumption ²	1.5 to 2.7 W
² Power consumption also shown on flow curves on page 2.	
Start-up (or locked rotor) current	0.43 / 0.20 A (12 / 24 V)
Wire Length	Red / black leads, 250 mm length, 5mm stripped / tinned, capacitor (0.33 µF) suppression
Wire Gauge	22 AWG
Recommended PWM Frequency	> 16 kHz
Max Ambient Operating Temperature	50 °C
Max Media Temperature	100 °C
Elastomer Options:	
Diaphragm	EPDM / Viton (FKM)
Valves	EPDM / Viton (FKM)
Gasket	EPDM / Viton (FKM)
Eccentric Options:	0.6 / 0.85 mm
Other Wetted Parts	PPS (polyphenylene sulphide)
Weight	60 g

Bold indicates configuration applicable to this datasheet

Order Information

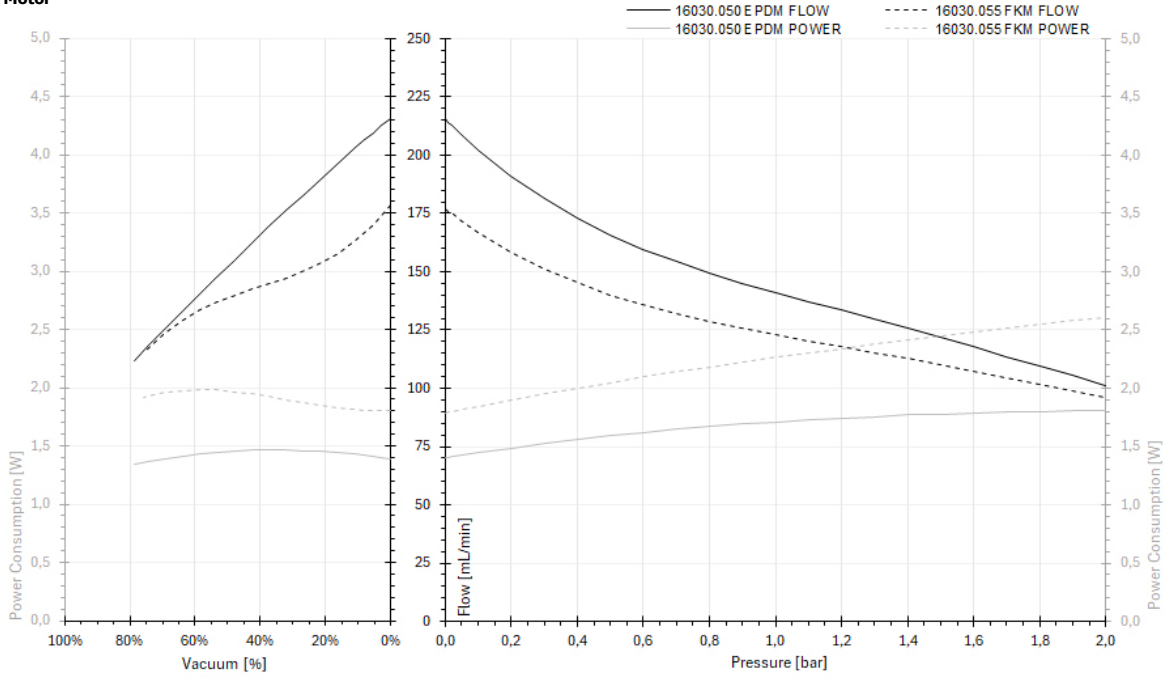
Description	Motor	Voltage	Elastomer Materials			Part Number
			Diaphragm	Valve	Gasket	
16K Liquid Diaphragm Pump	DC	12.0	EPDM	EPDM	EPDM	16030.650
16K Liquid Diaphragm Pump	DC	12.0	FKM	FKM	FKM	16030.655
16K Liquid Diaphragm Pump	DC	24.0	EPDM	EPDM	EPDM	16030.660
16K Liquid Diaphragm Pump	DC	24.0	FKM	FKM	FKM	16030.665

Boxer Pumps > Products > Liquid Diaphragm Pump

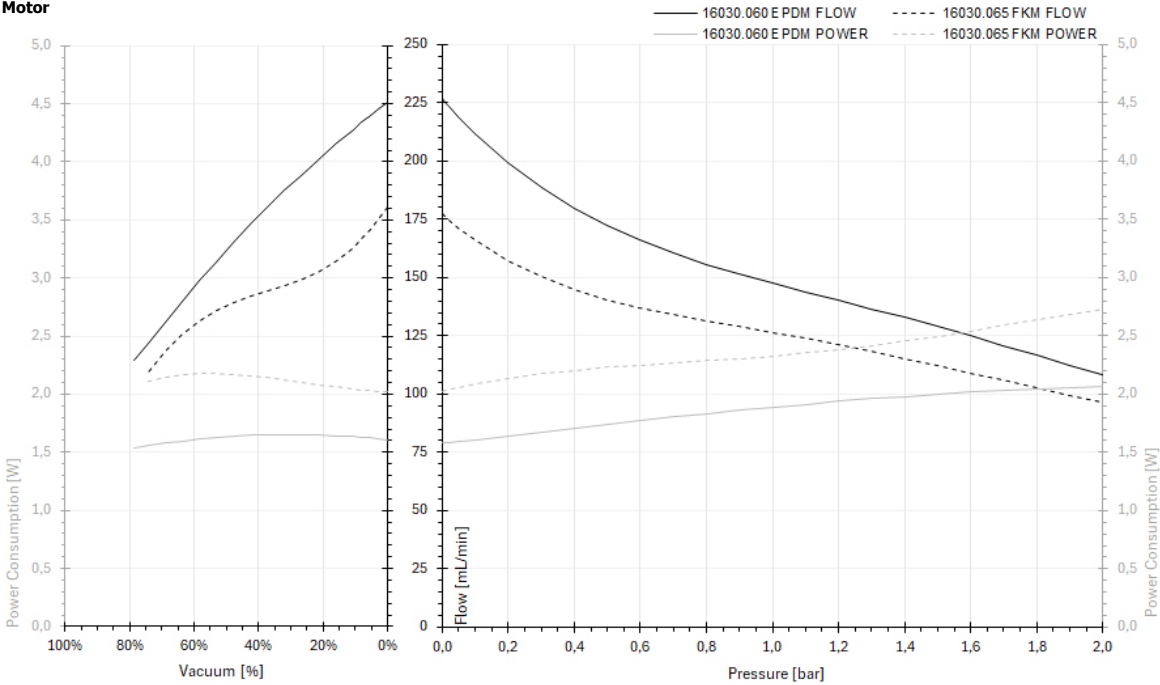
Flow Curves

At nominal motor voltage (12.0 and 24.0 V DC).

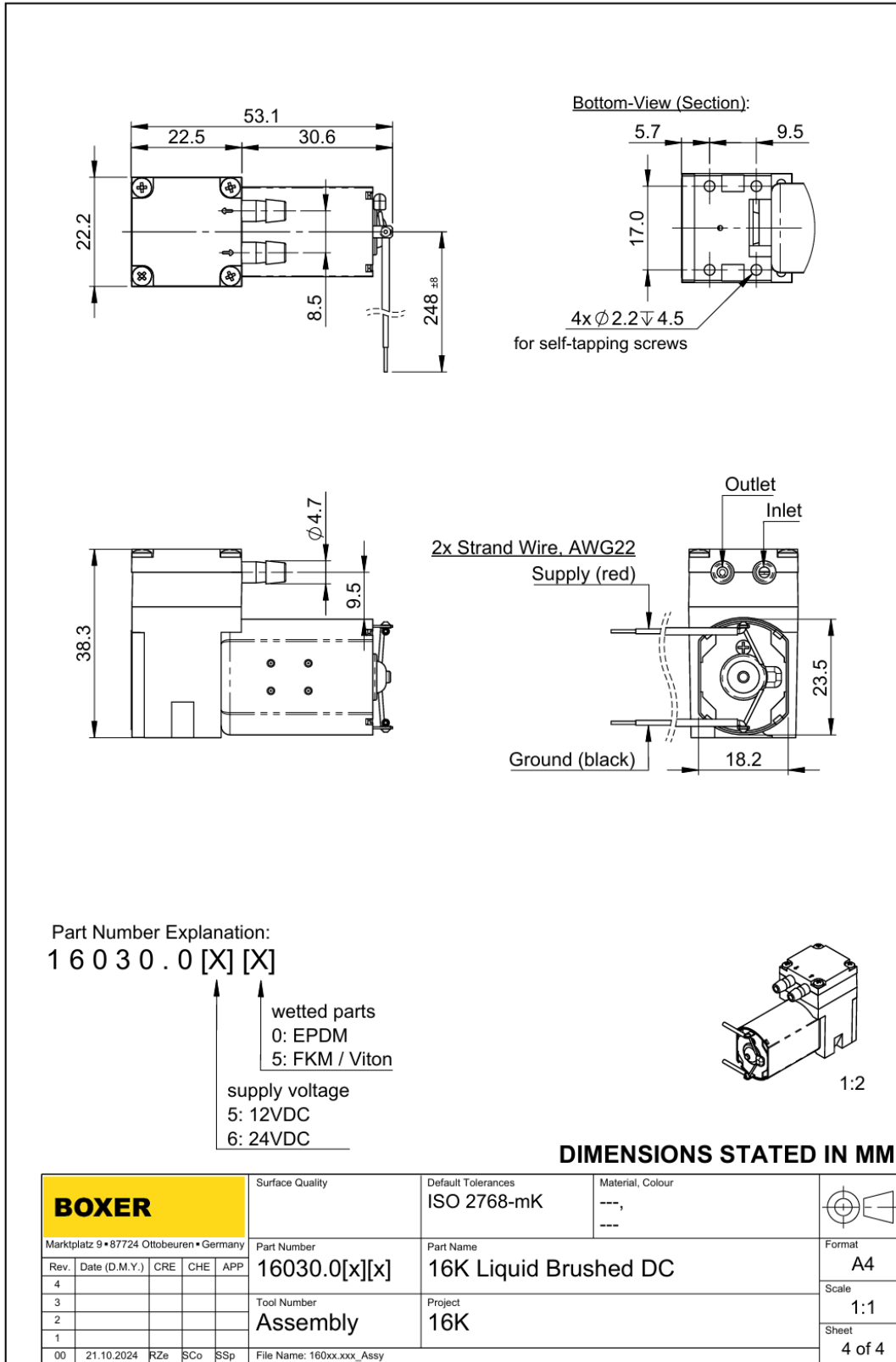
12 V DC Motor



24 V DC Motor



Engineering Drawing



BXP_A4_Portrait_02.drwdot, 05/2023

DISCLAIMER: ALL PRODUCT SPECIFICATIONS AND DATA ARE SUBJECT TO CHANGE WITHOUT NOTICE. BOXER GMBH, ITS EMPLOYEES AND ALL PERSONS ACTING ON THEIR BEHALF, DISCLAIM ANY AND ALL LIABILITY FOR ANY ERRORS, INACCURACIES OR INCOMPLETENESS CONTAINED IN ANY DATASHEET OR ANY OTHER DISCLOSURE RELATED TO ANY PRODUCT. THE CUSTOMER IS RESPONSIBLE TO VALIDATE THAT THE PRODUCT WITH THE PROPERTIES DESCRIBED IN ITS SPECIFICATION IS SUITABLE FOR USE IN A PARTICULAR APPLICATION. PARAMETERS PROVIDED IN DATASHEET AND/OR SPECIFICATION MAY VARY IN DIFFERENT APPLICATIONS AND PERFORMANCE MAY VARY OVER TIME. ALL OPERATING PARAMETERS MUST BE VALIDATED FOR EACH CUSTOMER APPLICATION BY CUSTOMERS' TECHNICAL EXPERTS. PRODUCT SPECIFICATION DOES NOT EXPAND OR MODIFY BOXER GMBH TERMS & CONDITIONS OF PURCHASE, INCLUDING BUT NOT LIMITED TO THE WARRANTY EXPRESSED WITHIN, NO LICENSE, EXPRESS OR IMPLIED, BY ESTOPPEL OR OTHERWISE, TO ANY INTELLECTUAL PROPERTY RIGHTS IS GRANTED BY THIS DOCUMENT OR BY ANY CONDUCT OF BOXER GMBH.

All data is representative for initial selection purposes. It is the responsibility of the user to determine suitability for the intended use. Technical changes reserved.